

TREVIRA

Composition: 100% POLYESTER TREVIRA CS
Weight: 340 g/m2
Light fastness: Scale 6 (blue scale) Xenotest
Abrasion resistance: 100.000 (rubs) Martindale
Cleaning washing:



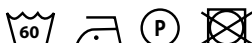
Fire resistance:

| | | | | | | | |
|----|-------|------------|----|--------------------|----|-------------|----------------|
| CI | CRIB5 | BS 7176 MH | M1 | NF D 60013 (AM 18) | B1 | EN 1021/1-2 | IMO A 652 (16) |
|----|-------|------------|----|--------------------|----|-------------|----------------|



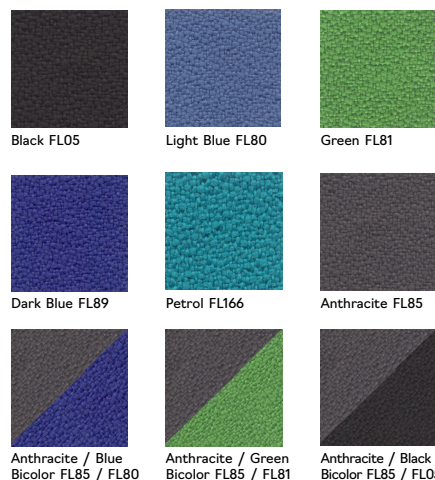
FLEX

Composition: 100% POLYESTER TREVIRA CS
Weight: 300 g/m2
Light fastness: Scale 6 (blue scale) Xenotest
Abrasion resistance: 100.000 (rubs) Martindale
Cleaning washing:



Fire resistance:

| | | | | | | | |
|----|-------|------------|----|--------------------|----|-------------|----------------|
| CI | CRIB5 | BS 7176 MH | M1 | NF D 60013 (AM 18) | B1 | EN 1021/1-2 | IMO A 652 (16) |
|----|-------|------------|----|--------------------|----|-------------|----------------|



TREVIRA BLEND

Composition: 100% POLYESTER TREVIRA CS
Weight: 420 g/m2
Light fastness: Scale 6 (blue scale) Xenotest
Abrasion resistance: 100.000 (rubs) Martindale
Cleaning washing:



Fire resistance:

| | | | | | | | |
|----|-------|----|----|-------------|------------|-------------------|----------------|
| CI | CRIB5 | M1 | B1 | EN 1021/1-2 | BS 7176 MH | NF D 60013 (AM18) | IMO A 652 (16) |
|----|-------|----|----|-------------|------------|-------------------|----------------|



INDUSTRY OFFICE MEDICAL DENTAL UPHOLSTERY

STAMSKIN

Composition: Stamskin TOP F 4340, backing Polyamide-jersey, coating antimicrobial and anti-fungal treatment
Weight: 780 g/m2
Light fastness: Scale 7
Abrasion resistance: > 120.000 rubs Martindale
Advantages: Urine-, blood-, sweat, fungal and waterproof, manufactured to environmentally friendly standards ISO 14001
Cleaning: With brush, water and soap, rinse of with water, do not clean with stainremovers containing solvents or oily products
N°528/2012/CE-Folpet: Stamskin Top contains the biocidal product Folpet, an antifungal additive used to help maintaining appearance, physical properties and prolong the service of these articles.

Flame retardant:

| | | |
|-------------|-----------------|---------------|
| UK: BS 5852 | D: DIN 53438/T2 | F: NFP 92.507 |
|-------------|-----------------|---------------|



PUxx

Composition: PUxx no. 1, 100% Polyurethane, backing polyester cotton mixture, free from Phthalate and PVC.
Weight: ± 520 g/m2
Light fastness: 6-7 (8 is excellent)
Abrasion resistance: > 300.000 Martindale
Advantages: PUxx nr. 1 is free of Phthalate and PVC and OEKO-TEX certified. 100% waterproof. Urine and blood resistant. Extremely scratch resistant surface. Easily transport for heat (no sweat feeling). PUxx no. 1 is easy to clean and disinfect. It is resistant to most cleaning agents and disinfectants (based on alcohol, chlorine and ammonia). Do not use solvents.
Cleaning:

Flame retardant:

| | | | | |
|-------------------|-------------|--------------|----------------------|---|
| GB BS 5852 Crib 5 | EN 1021 1-2 | CALL117-2013 | IMO 2010 FTP: part 8 | D DIN 4102 B1 (available on request only) |
|-------------------|-------------|--------------|----------------------|---|

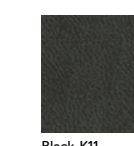


LEATHERETTE

Composition: Backing Cotton Jersey, coating fire retardant plasticised PVC
Weight: 590 g/m2
Light fastness: ISO105 >6
Cleaning: Clean material with humid cloth and householdsoap. Do not use cleaning materials that contain solvents.

Flame retardant:

| | |
|---------------------------------|---------------|
| FMVSS 302 (= 95/28/EG IV, R118) | b, EN1021 1+2 |
|---------------------------------|---------------|



ESD DRALON

Composition: Dralon-Bekinox
Weight: 560 g/m2
Colour fastness: Scale 5-8
Abrasion resistance: 500.000 rubs Martindale
Cleaning: With a damp cloth, do not use bleach

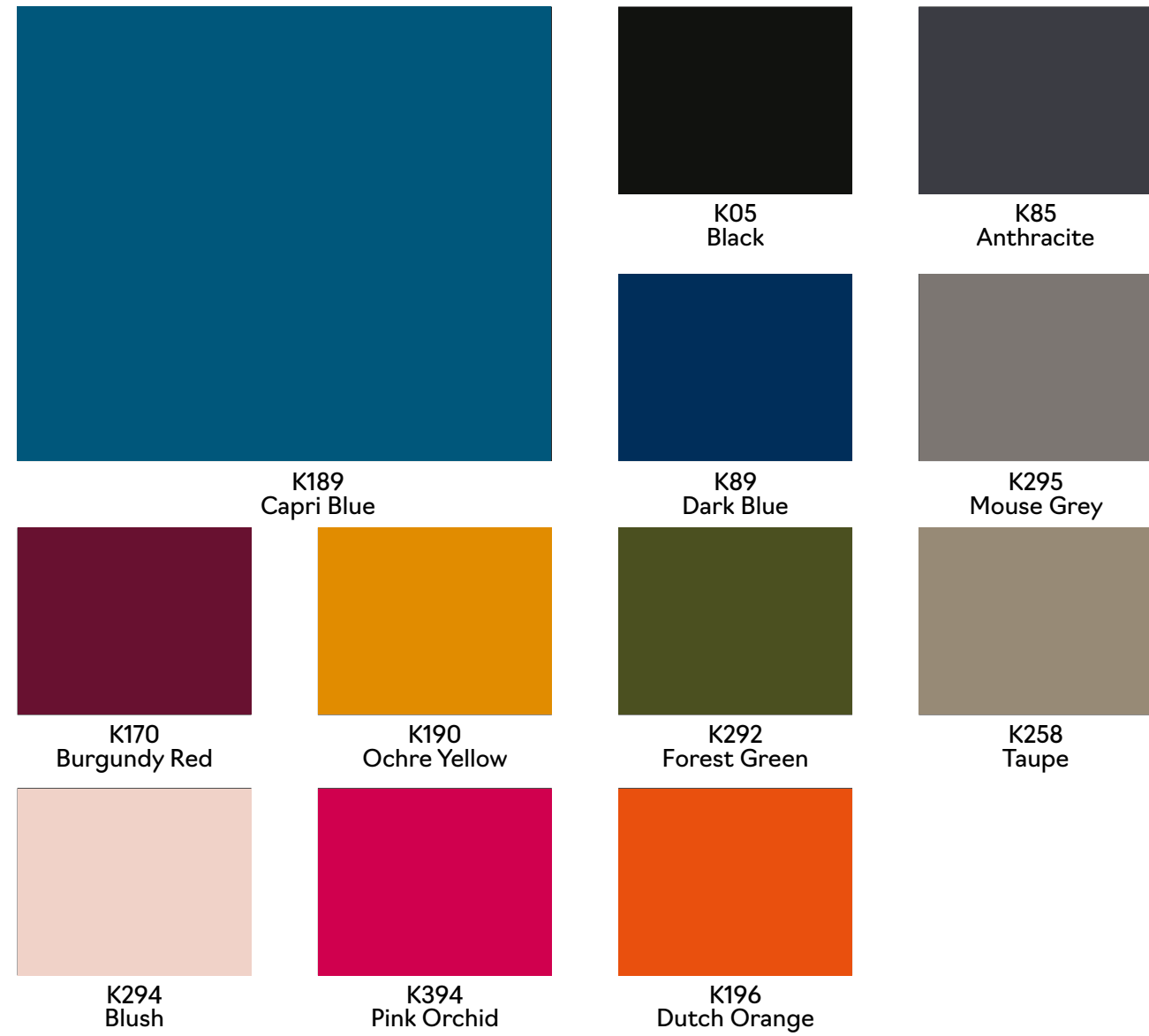


ESD LEATHERETTE

Composition: PVC Compound/CO/RES
Weight: 630 g/m2, ± 50 g/m2 knitted fabric
Colour fastness: Scale 6-8
Cleaning: With a damp cloth, do not use bleach

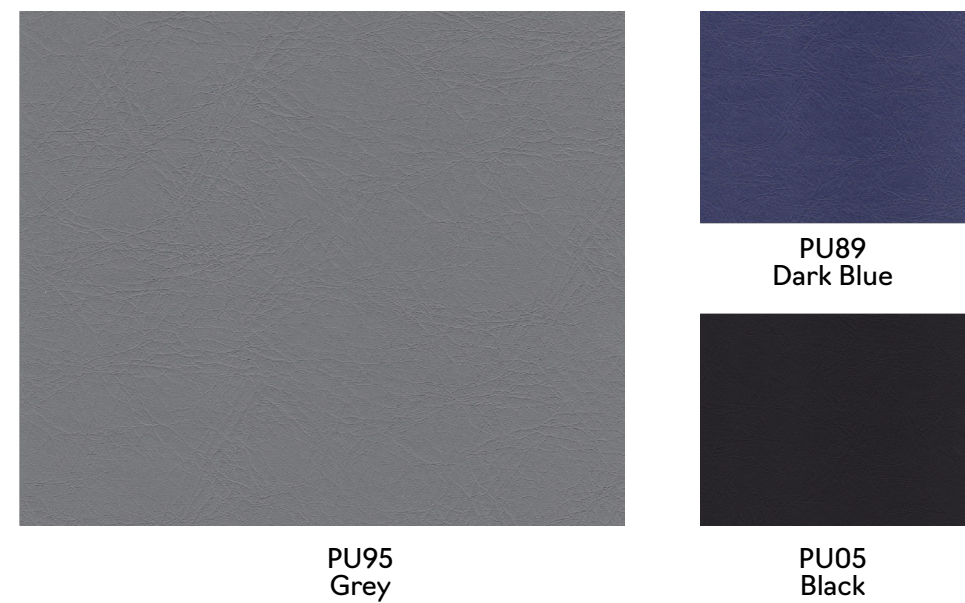


Stamskin

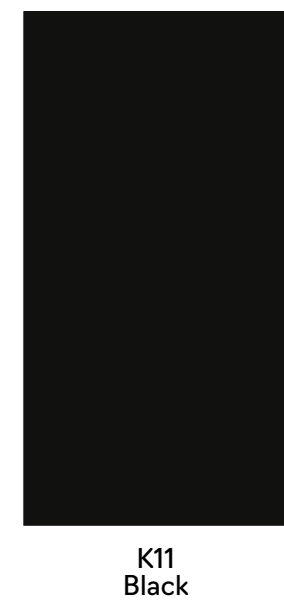


All Stamskin colours can be combined with each other to form bicolor colors

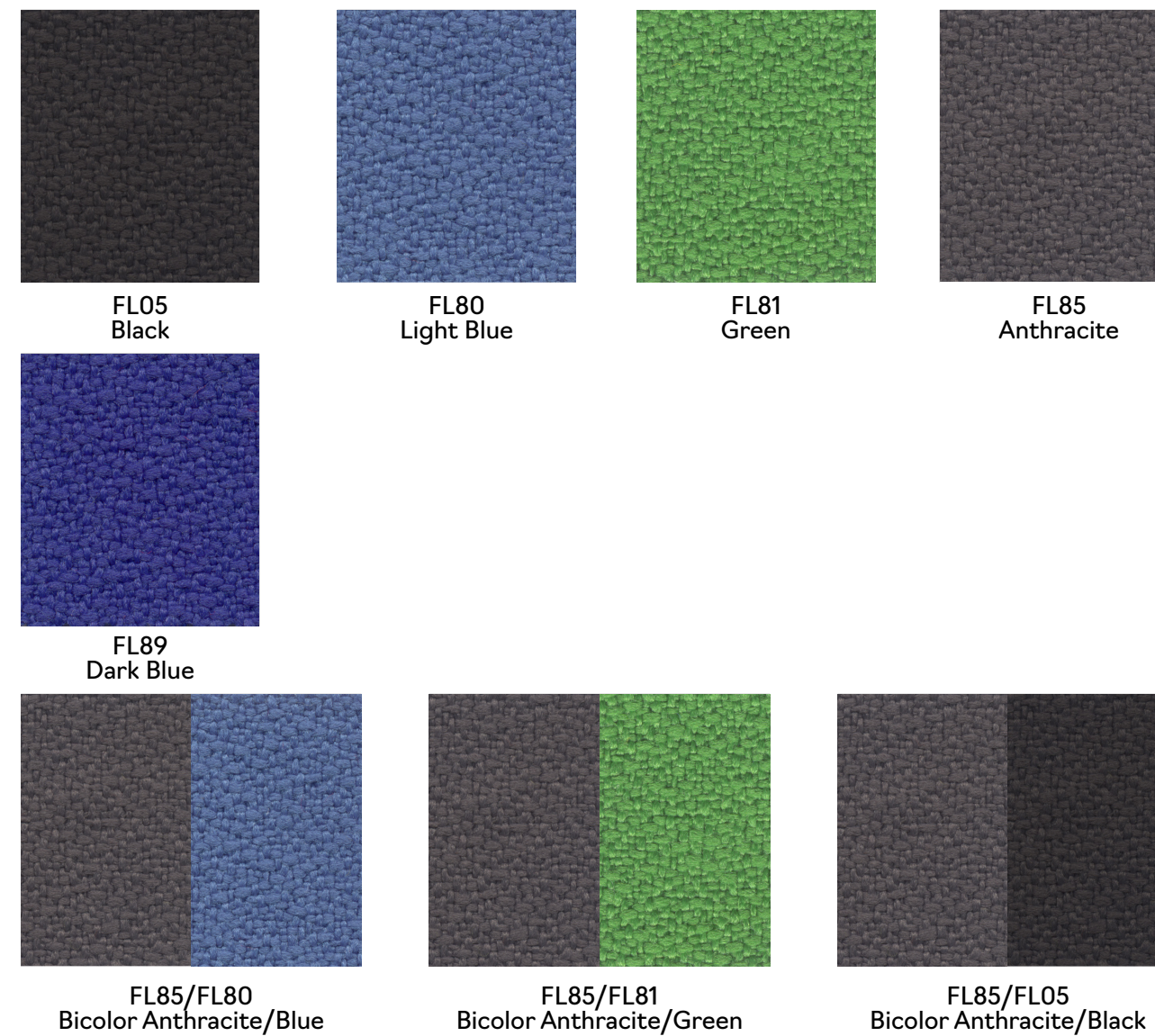
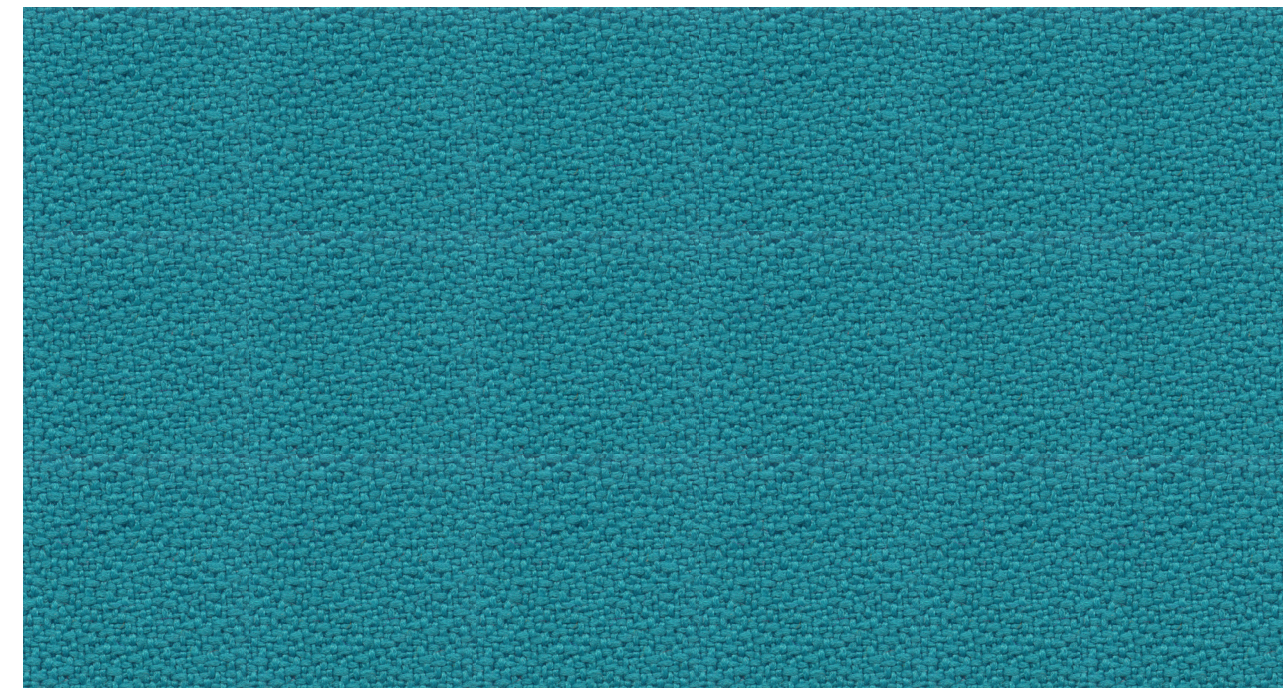
PUxx



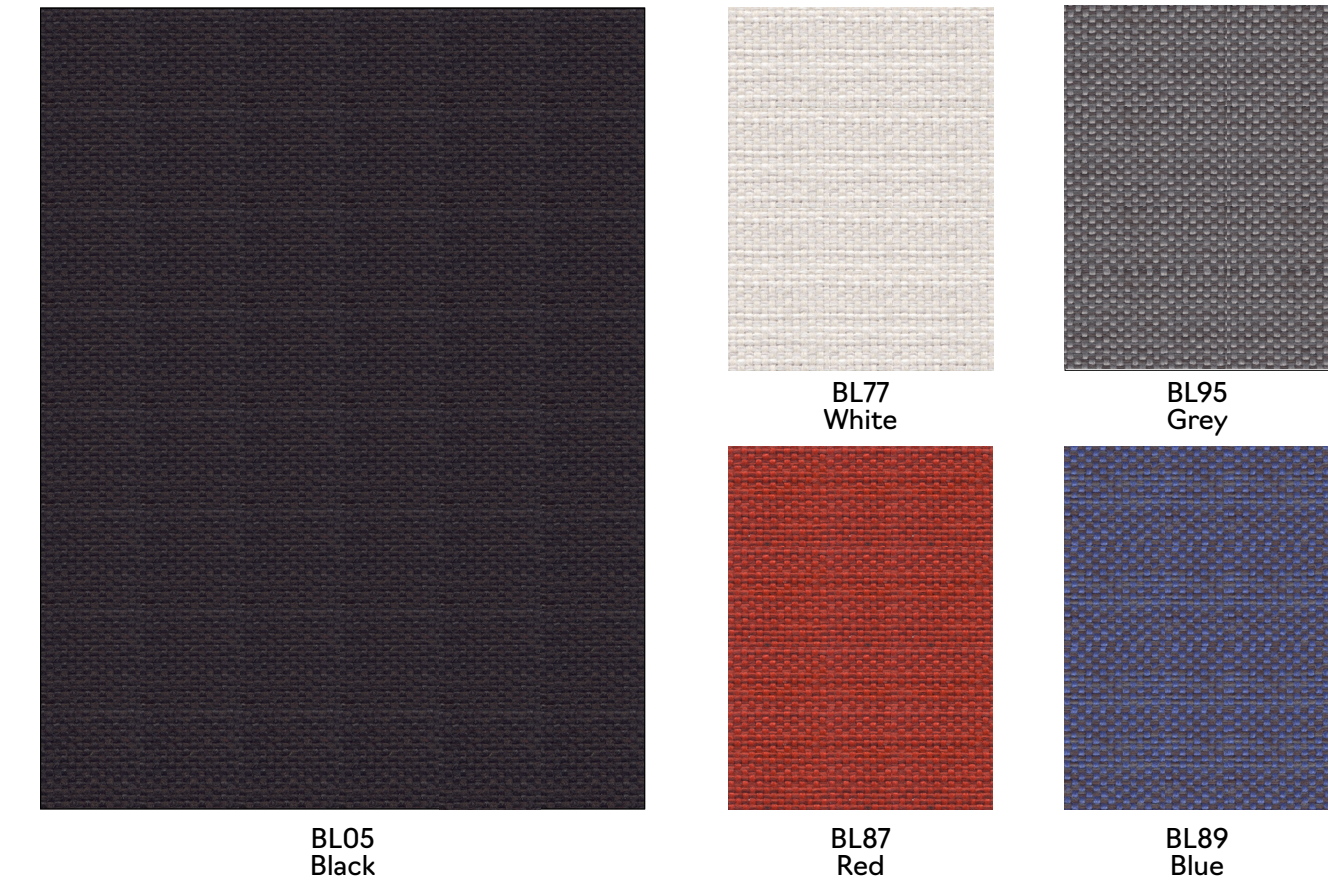
Leatherette



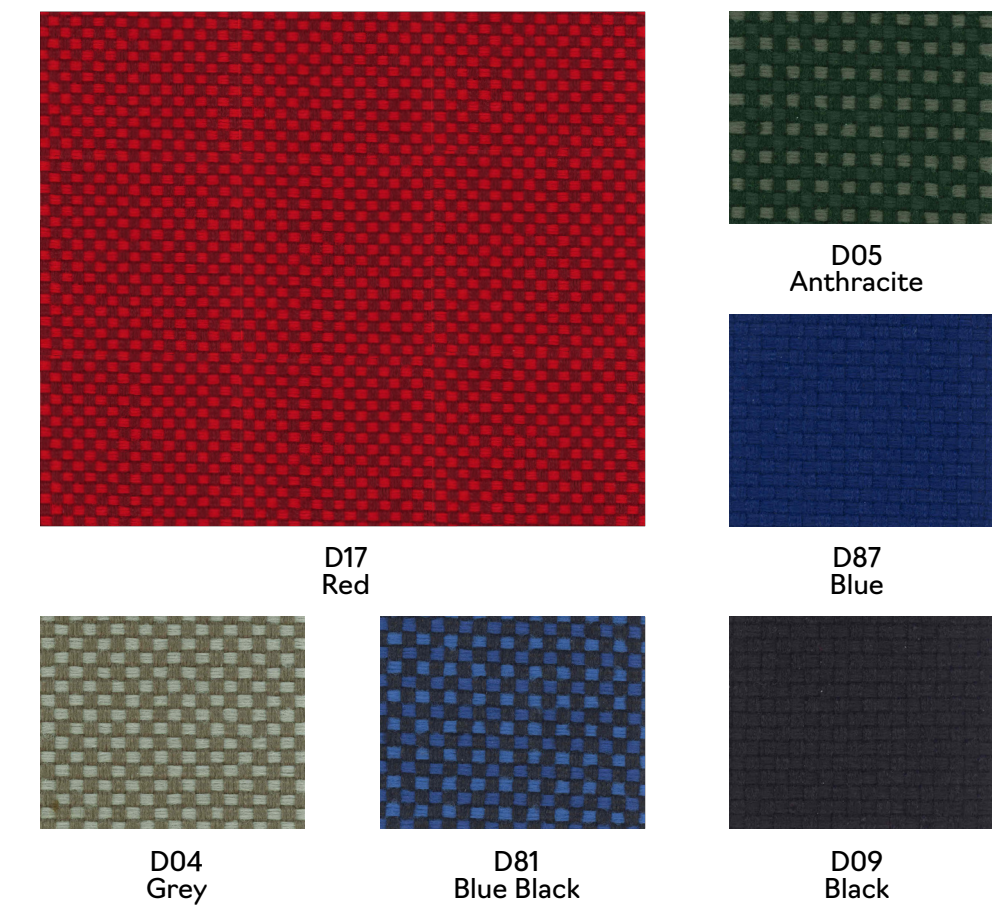
Flex



Blend



Trevira



ESD

